GENERAL NOTES

FOR CONTRACTOR

FOR CONSULTANT

M.R. THAMPI
CHIEF CONSULTANT
FOR ANANTHAPURI CONSULTANTS

FOR CLIENT

PROJECT CAPE THALASHERI

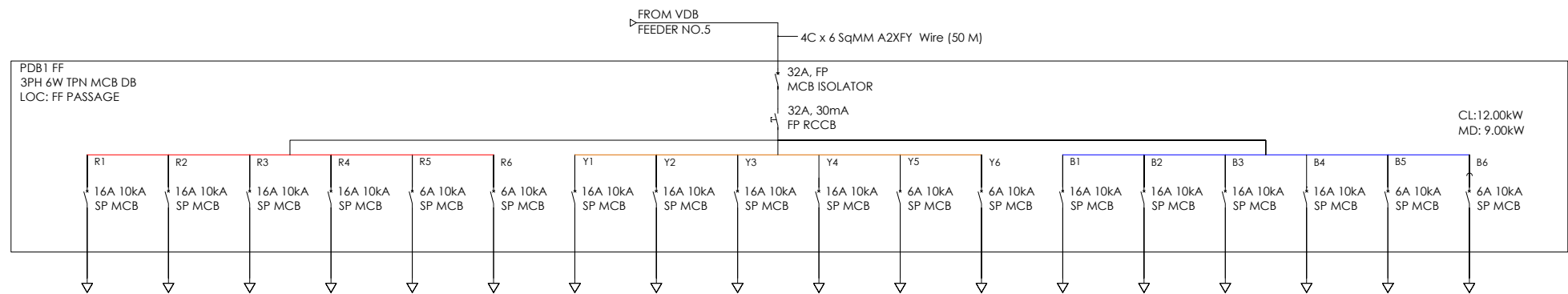
LDB FF2

DRAWING STATUS: GOOD FOR CONSTRUCTION

DESIGNED BY: BENNY APPROVED: MRT

PROJECT NO.	DWG NO.	DATE: 11.01.2016
-------------	---------	------------------





EQUIPMENT NO.						
EQUIPMENT DESCRIPTION						
CONNECTED LOAD(kW)						
MAXIMUM DEMAND(kW)						
SWITCHGEAR RATING(A)						
BACK UP FUSE RATING(A)						
POWER CABLE/ WIRES	SIZE IN SQ.MM					
	NO. OF RUNS/CORES					
	TYPE OF CABLE					
	LENGTH IN METERS					
SIZE OF EARTH COND. [Cu]						
LOCATION						
REF. DRAWING NO:						
WIRING DETAILS	POWER POINTS WIRED WITH 2x2.5SQ. MM PVC INSULATED CU WIRE WITH 1x1.5 SQ. MM PVC INSULATED GREEN CU WIRE.					

SL	SYMBOL	DESCRIPTION	QUANTITY
			A
			B
			C

GENERAL NOTES

FOR CONTRACTOR

FOR CONSULTANT

M.R. THAMPI
CHIEF CONSULTANT
FOR ANANTHAPURI CONSULTANTS

FOR CLIENT

PROJECT CAPE THALASHERI

TITLE	PDB FF
-------	--------

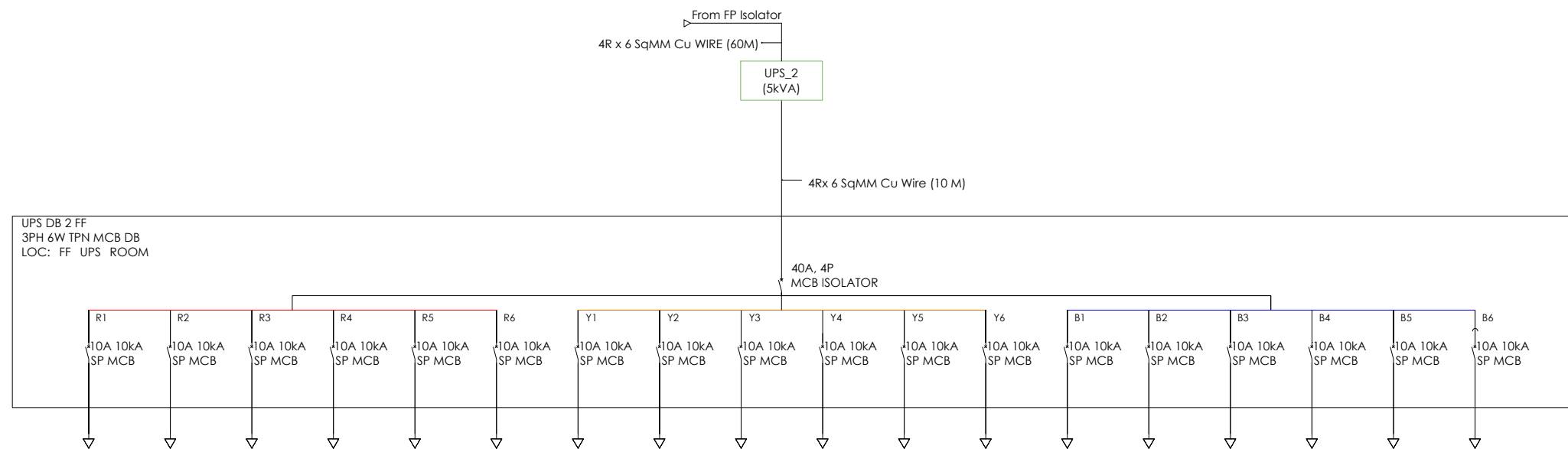
DRAWING STATUS: GOOD FOR CONSTRUCTION

R0	-	
REV.	DATE	REMARKS

DESIGNED BY:	BENNY	APPROVED:	MRT
--------------	-------	-----------	-----

PROJECT NO.	DWG NO.	DATE: 11.01.2016
-------------	---------	------------------





EQUIPMENT NO.						
EQUIPMENT DESCRIPTION						
CONNECTED LOAD(KW)						
MAXIMUM DEMAND(KW)						
SWITCHGEAR RATING(A)						
BACK UP FUSE RATING(A)						
POWER CABLE/ WIRES	Spare	COMPUTER POINTS	Spare	COMPUTER POINTS	Spare	COMPUTER POINTS
SIZE IN SQ.MM						
NO. OF RUNS/CORES						
TYPE OF CABLE						
SIZE OF EARTH COND. [Cu]						
LOCATION						
REF. DRAWING NO:						
WIRING DETAILS	COMPUTER POINTS WIRED WITH 2x1.5 SQ MM PVC INSULATED FLRS CUWIRE & EARTHING WITH 1x1.5 SQ MM PVC INSULATED GREEN CU WIRE.					

[illegible]

GENERAL NOTES

FOR CONTRACTOR

FOR CONSULTANT

M.R. THAMPI
CHIEF CONSULTANT
FOR ANANTHAPURI CONSULTANTS

FOR CLIENT

PROJECT

CAPE THALASHERI

TITLE

UPS DB 2

DRAWING STATUS:	GOOD FOR CONSTRUCTION
-----------------	-----------------------

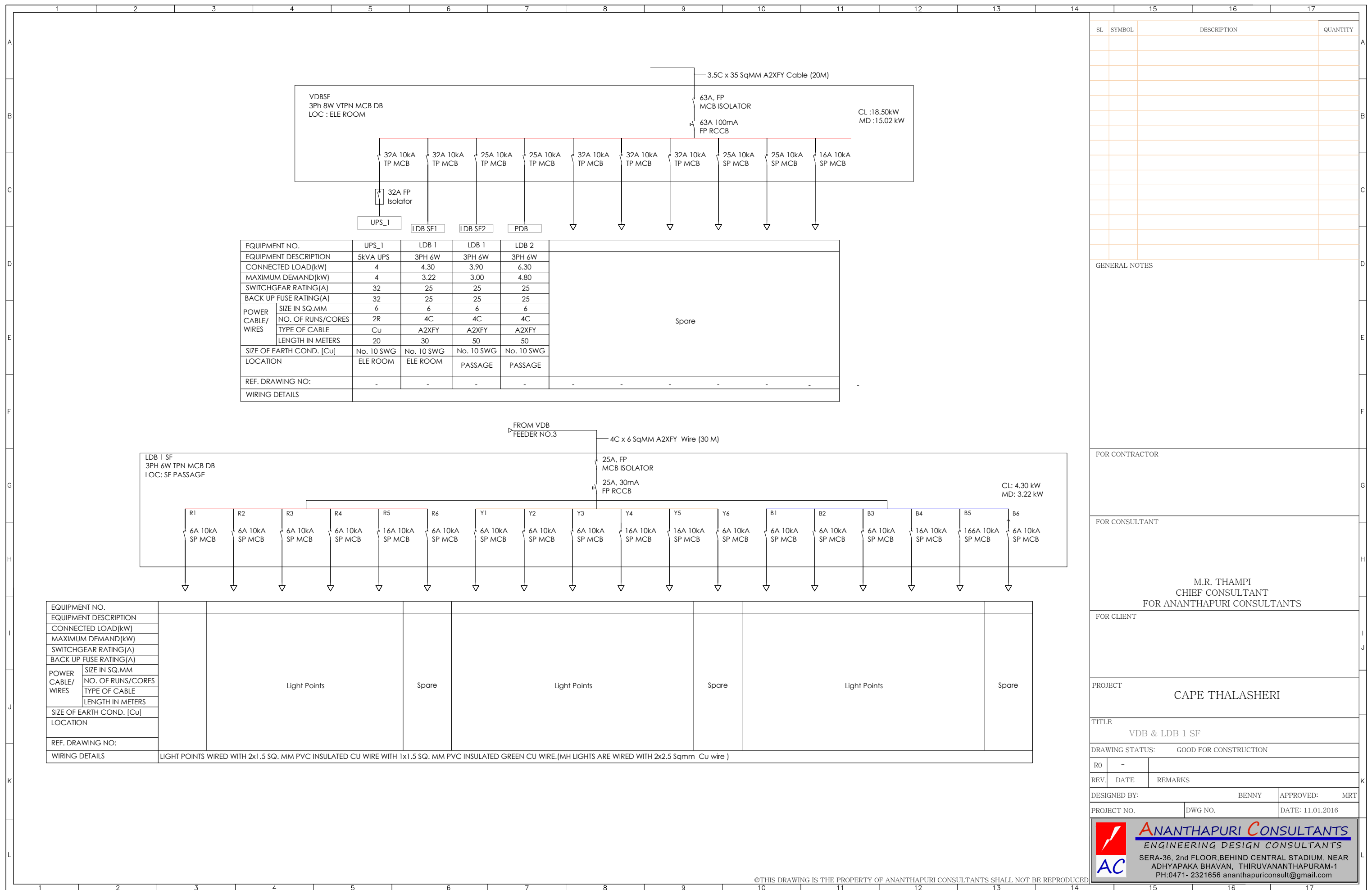
RO	-	
REV.	DATE	REMARKS

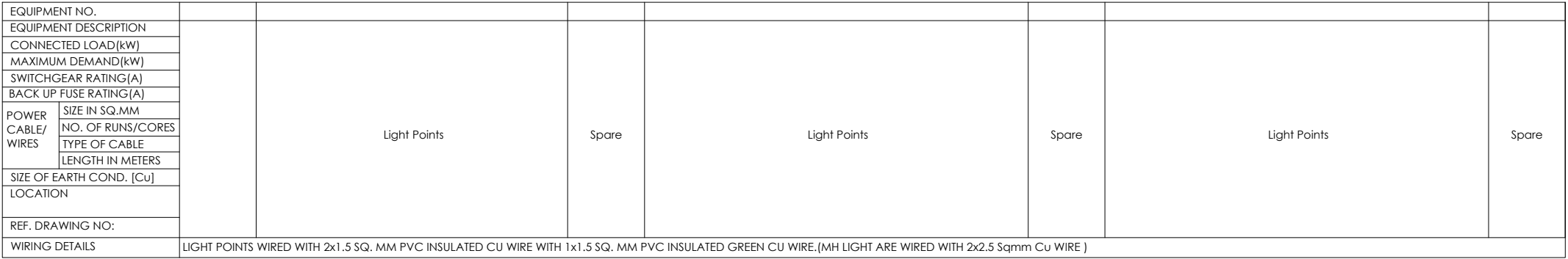
DESIGNED BY:	BENNY	APPROVED:	MRT
--------------	-------	-----------	-----

PROJECT NO.	DWG NO.	DATE: 11.01.2016
-------------	---------	------------------



ANANTHAPURI CONSULTANTS
ENGINEERING DESIGN CONSULTANTS
SERA-36, 2nd FLOOR, BEHIND CENTRAL STADIUM, NEAR
ADHYAPAKA BHAVAN, THIRUVANANTHAPURAM-1
PH: 0471- 2321656 ananthapuriconsult@gmail.com



GENERAL NOTES

FOR CONTRACTOR	
----------------	--

FOR CONSULTANT	
----------------	--

FOR CLIENT

PROJECT	
---------	--

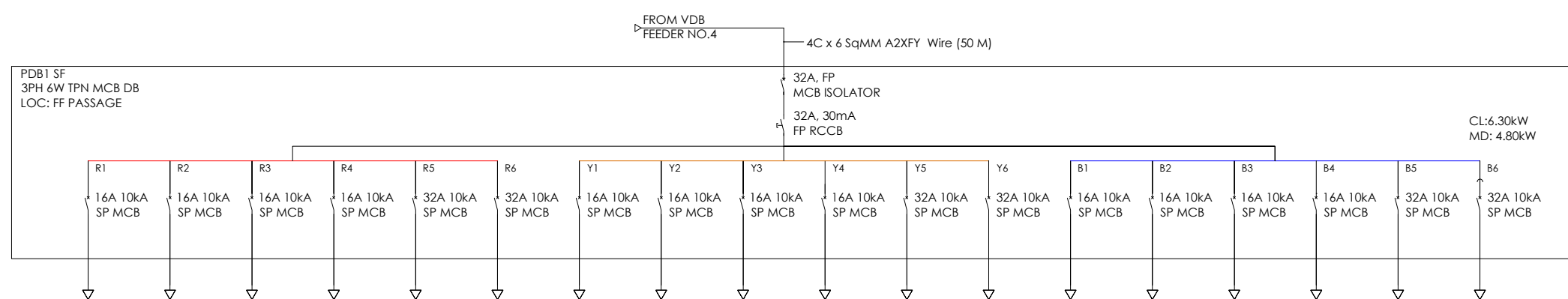
TITLE

DRAWING STATUS:	GOOD FOR CONSTRUCTION
-----------------	-----------------------

DESIGNED BY:	BENNY	APPROVED:	MRT
--------------	-------	-----------	-----

PROJECT NO.	DWG NO.	DATE: 11.01.2016
-------------	---------	------------------

©THIS DRAWING IS THE PROPERTY OF ANANTHAPURI CONSULTANTS SHALL NOT BE REPRODUCED



EQUIPMENT NO.						
EQUIPMENT DESCRIPTION						
CONNECTED LOAD(KW)						
MAXIMUM DEMAND(KW)						
SWITCHGEAR RATING(A)						
BACK UP FUSE RATING(A)						
POWER CABLE/ WIRES	SIZE IN SQ.MM					
	NO. OF RUNS/CORES					
	TYPE OF CABLE					
	LENGTH IN METERS					
SIZE OF EARTH COND. [Cu]						
LOCATION						
REF. DRAWING NO:						
WIRING DETAILS	POWER POINTS WIRED WITH 2x2.5 SQ. MM PVC INSULATED CU WIRE WITH 1x1.5 SQ. MM PVC INSULATED GREEN CU WIRE.					

[illegible]

GENERAL NOTES

FOR CONTRACTOR

FOR CONSULTANT

M.R. THAMPI
CHIEF CONSULTANT
FOR ANANTHAPURI CONSULTANTS

FOR CLIENT

PROJECT

CAPE THALASHERI

	TITLE
--	-------

PDB SF

DRAWING STATUS:	GOOD FOR CONSTRUCTION
-----------------	-----------------------

RO	-	
REV.	DATE	REMARKS

DESIGNED BY:	BENNY	APPROVED:	MRT
--------------	-------	-----------	-----

PROJECT NO.	DWG NO.	DATE: 11.01.2016
-------------	---------	------------------



